

Pb Free Thermal Cutoffs

ELCUT 32 Series



The photo of 32M is shown.

FEATURES

- The environment-friendly products do not contain cadmium and lead.

IMPORTANT NOTICE

Read Standard Specification and Instruction Manual for use thoroughly.

TERMS

- Rated Functioning Temperature (T_f)**
The acceptable tolerance is +0, -10°C except PSE. The one for PSE is ±7°C.

- Holding Temperature (C-UL & CSA: T_h, CCC: T_c)**
The highest temperature of the thermal cutoff at which it will not open the circuit for 168 hours while passing rated current. (Applicable to CSA, C-UL and CCC)

- Maximum Temperature Limit (T_m)**
The highest temperature at which continuity does not occur for 10 minutes after the fusing off of the thermal cutoff.

Ratings

Type No.	Rated Functioning Temperature T _f (°C)	Cut-off Temperature (°C)	T _h T _c (°C)	Max. Use Temp.* ² (°C)	T _m (°C)	Electrical Rating		UL	C-UL (CSA) ^{*1}	VDE	CCC	PSE
						Ampere (A)	Voltage (V)					
32E	108	104±3	92	86	200	1	AC250					
			88	82		2	AC125				-	-
32Z	115	112±3	89	89	200	1	AC250		*1			
						2	AC125		*1			-
32X	133	129±3	119	109	200	1	AC250					
			115	106		2	AC125				-	-
32M	139	135±3	118	118	200	1	AC250					
32J	145	141±3	127	122	200	0.8	AC250					
			120	115		2	AC125				-	-

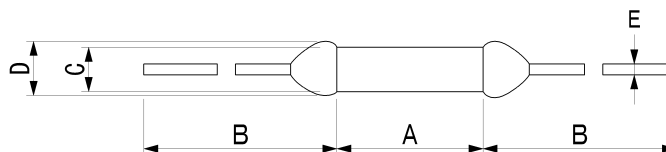
UL,C-UL:E50082, CSA: LR40743, VDE:923000-1171-0003

*1: Certified by CSA *2: Maximum allowable normal use temperature

Cut-off temperature is measured with silicone oil bath of which temperature is increased at the rate of 1°C /min. Detecting current is 0.1A or less.

T_h and T_c are for C-UL(CSA) and CCC respectively.

Dimensions



Dimensions (mm)					
Lead length	A	B	C	D	E
Regular	6.0±0.5	39±3	2.0±0.1	2.3 or below	0.53±0.02
Long		69±3			

Uchihashi Estec Co.,Ltd.

Headquarters/Overseas Sales Section

9-14, Imazu-Kita 2-chome, Tsurumi-ku, Osaka 538-0041 Japan

TEL (06)6962-6666(INT-81-6-6962-6666)

FAX (06)6962-6668(INT-81-6-6962-6668)

<http://www.uchihashi.co.jp/english/>