

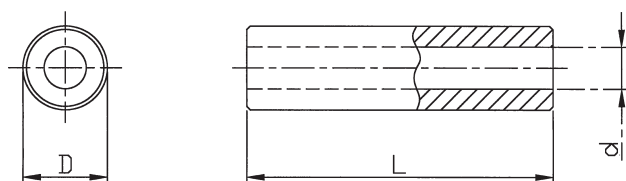


- Tolerance for length dimensions: +/- 0.1 mm

- Available from stock. Delivery times for intermediate lengths and special versions upon request.



Standard range – spacer sleeves [Brass, nickel plated]



Order No.	Execution	Material	Diameter D (mm)	Diameter d (mm)	Standard lengths in mm
314 / 2.1 x (length)	DH	Brass	4.0	2.1	2, 3, 4, 5, 6, 7, 8, 9, 10, 12,
315 / 2.6 x	DH	Brass	5.0	2.6	2, 3, 4, 5, 6, 7, 8, 9, 10, 12, 15,
316 / 3.2 x	DH	Brass	6.0	3.2	2, 3, 4, 5, 6, 7, 8, 9, 10, 12, 15, 18, 20, 25, 30
318 / 4.3 x	DH	Brass	8.0	4.3	2, 3, 4, 5, 6, 7, 8, 9, 10, 12, 15, 18, 20, 25, 30
3110 / 5.3 x	DH	Brass	10.0	5.3	2, 3, 4, 5, 6, 7, 8, 9, 10, 12, 15, 18, 20, 25, 30

