



- Features:
- universal AC input/FULL range
 - Low leakage current <0.5mA
 - Protections: Short circuit/Over load /Over voltage/Over temperature
 - Cooling by free air convection
 - 100% full load burn-in test
 - Fix switching frequency at 67KHz
 - Low cost
 - High reliability
 - 2 year warranty

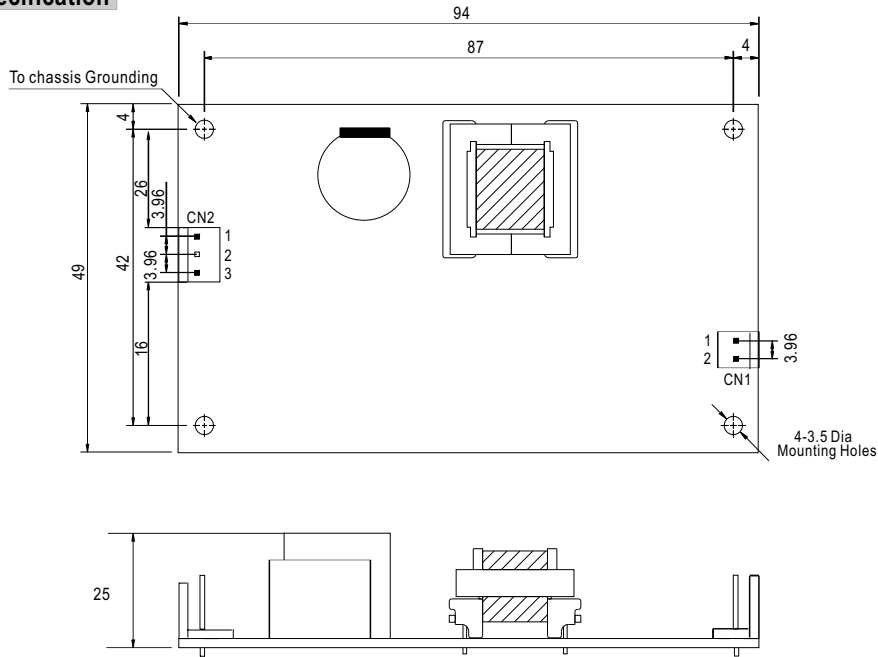
CB CE

SPECIFICATION

MODEL		PS-15-5	PS-15-12	PS-15-15	PS-15-24	PS-15-48
OUTPUT	DC VOLTAGE	5V	12V	15V	24V	48V
	RATED CURRENT	2.8A	1.25A	1A	0.625A	0.313A
	CURRENT RANGE	0 ~ 2.8A	0 ~ 1.25A	0 ~ 1A	0 ~ 0.625A	0 ~ 0.313A
	RATED POWER	15W	15W	15W	15W	15W
	RIPPLE & NOISE (max.) Note.2	50mVp-p	100mVp-p	100mVp-p	150mVp-p	200mVp-p
	VOLTAGE TOLERANCE Note.3	± 2.0%	± 2.0%	± 2.0%	± 2.0%	± 2.0%
	LINE REGULATION	± 1.0%	± 1.0%	± 1.0%	± 0.5%	± 0.5%
	LOAD REGULATION	± 1.0%	± 1.0%	± 1.0%	± 0.5%	± 0.5%
SETUP, RISE, HOLD TIME		5~24V: 1200ms, 30ms, 100ms, 48V: 1200ms, 75ms, 100ms at full load				
INPUT	VOLTAGE RANGE	85 ~ 264VAC 120 ~ 370VDC				
	FREQUENCY RANGE	47 ~ 63Hz				
	EFFICIENCY(Typ.)	74%	77%	78%	79%	77%
	AC CURRENT	0.4A/115VAC 0.25A/230VAC				
	INRUSH CURRENT(max.)	COLD START 40A/230VAC				
LEAKAGE CURRENT		<0.5mA / 240VAC				
PROTECTION	OVER LOAD	Above 105% rated output power Protection type : Hiccup mode, recovery automatically after fault condition is removed				
	OVER VOLTAGE	5.75~ 6.75V	13.8~ 16.2V	17.25~ 20.25V	27.6~ 32.4V	55.2~ 64.8V
	OVER TEMPERATURE	U1 Tj140 typically(U1)Detect on main control IC Protection type : Hiccup mode, recovery automatically after temperature goes down				
ENVIRONMENT	WORKING TEMP.	-10~ +60 (Refer to output load derating curve), 20 ~ 90% RH non-condensing				
	WORKING HUMIDITY	20 ~ 90% RH non-condensing				
	STORAGE TEMP., HUMIDITY	-20 ~ +85°C, 10 ~ 95% RH				
	TEMP. COEFFICIENT	±0.03%/°C (0 ~ 50°C)				
VIBRATION		10 ~ 500Hz, 2G 10min./1cycle, Period for 60min.each along X, Y, Z axes				
SAFETY & EMC (Note 4)	SAFETY STANDARDS	TUV EN60950-1 Approved				
	WITHSTAND VOLTAGE	I/P-O/P:3KVAC I/P-FG:1.5KVAC O/P-FG:0.5KVAC				
	ISOLATION RESISTANCE	I/P-O/P, I/P-FG, O/P-FG:100M Ohms/500VDC				
	EMI CONDUCTION & RADIATION	Compliance to EN55022 (CISPR22) Class B				
	HARMONIC CURRENT	Compliance to EN61000-3-2,-3				
EMS IMMUNITY		Compliance to EN61000-4-2,3,4,5,6,8,11, Light industry level, criteria A				
OTHERS	DIMENSION	94*49*25mm (L*W*H)				
	PACKING	83mg;120PCS/10.96Kg				
NOTE		<p>1. All parameters NOT specially mentioned are measured at 230VAC input, rated load and 25°C of ambient temperature.</p> <p>2. Ripple & noise are measured at 20MHz of bandwidth by using a 12" twisted pair-wire terminated with a 0.1uf & 47uf parallel capacitor.</p> <p>3. Tolerance : includes set up tolerance, line regulation and load regulation.</p> <p>4. The power supply is considered a component which will be installed into a final equipment. The final equipment must be re-confirmed that it still meets EMC directives.</p>				

Mechanical Specification

Unit:mm



AC Input Connector (CN2) : TKP PVHI or equivalent

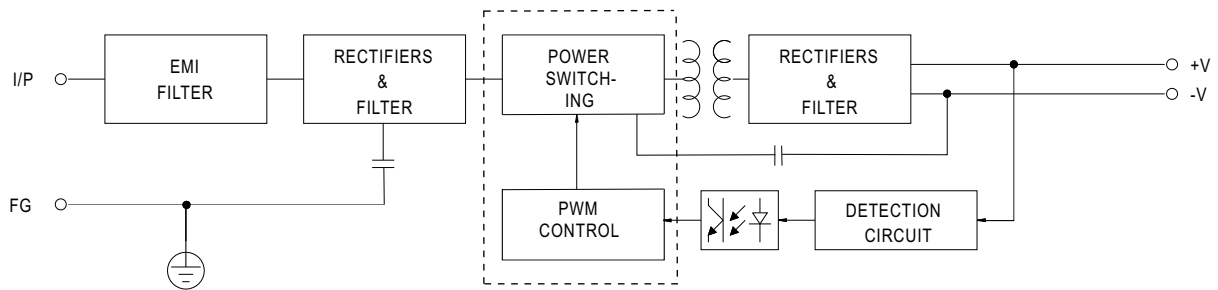
Pin No.	Assignment	Mating Housing	Terminal
1	AC/N	TKP HVH or equivalent	TKP PVHI or equivalent
2	NC		
3	AC/L		

DC Output Connector (CN1) : TKP PVHI or equivalent

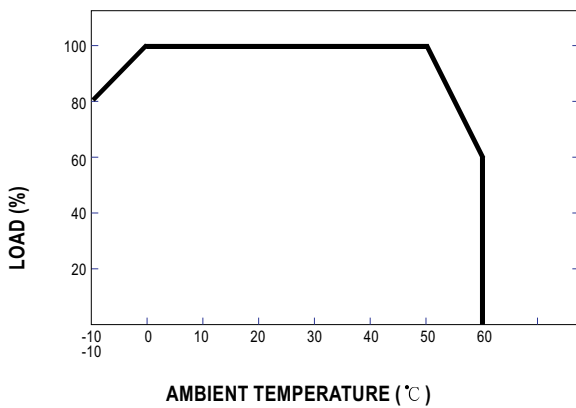
Pin No.	Assignment	Mating Housing	Terminal
1	+V	TKP HVH or equivalent	PVHI or equivalent
2	-V		

Block Diagram

fosc : 67KHz



Output Derating



Static Characteristics

